

DLM2 SERIES

DESCRIPTION

Built out of high quality metal. This fixture is not only bright, but durable. This linear fixture can be used to create any pattern required at almost any length.

Mounting options include surface, Recessed Mud-in Trim, Trimmed, Pendant, and Wall Mountable options. Transition from type to the other are possible as well.

Using our patent pending technology, upon option selection, segments can be cut in field every 1.5 inches. That means you get the customization of a high end linear combined with all ways in stock modules and field length customization.



SPECIFICATION FEATURES

Construction: 0.5mm thickness metal with white powder coating. 2.6mm thickness LED Frosted PC material

Field Adjustable: Color temperature (2700K/ 3000K /3500K /4000K /5000K) and wattage and lumens can be field adjusted via small dip switches on the LED Board

Field Installable options: Up lighting and connectors can be installed in field.

Qualifications: ETL, T24, Energy Star, Damp Location

Mounting: Surface, Recessed Mud-in Trim, Trimmed, Pendant, and Wall Mountable with additional components as shown on page 6.

Electrical: 120-277v 50/60 hz input. Dimmed via 0-10v

Optional: Optional integral Emergency battery or integral occupancy sensor make this the perfect option for any location.

ORDERING MATRIX

SERIES	WIDTH	LENGTH	OPTIONS
--------	-------	--------	---------

DLM

2

	WATTAGE	LUMEN
8	100	12000
4	50	6000
1	15	1800

AT 30K and HIGHEST WATT
 SETTING, OTHERS SEE PAGE 8

OCC - Occupancy Sensor

EM - Integral Emergency Battery Pack

UP - Factory installed uplight

DLM2 SERIES

PERFORMANCE DETAILS

Materials	0.5mm thickness metal with white powder coating
Dimensions	1.4, and 8 foot segments
Input Voltage	120v-277v
Wattage	Field Selectable
Finish	White Standard, Custom Finish available
Cut Length	1.5 inches

CRI	80
Mounting	Pendant or surface mounted
Operating temperature	-20°F to 100°F
Color Temperature	2700K / 3000K / 3500K / 4000K / 5000K Field Selectable
Dimming capability	0-10 volt
Certifications	ETL, T24, Energy Star, Damp Location
Beam Angle	133 degrees

FIELD CUTTABLE

With a housing that has an industry changing miniature 0-10v dimming driver, the housing can be cut to almost any size imaginable.

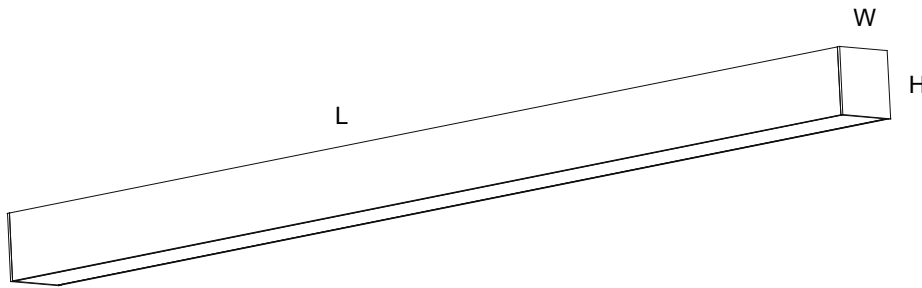
The onboard LEDs have 2 micro switches to enable instant field changeable CCT and wattage/lumens.

To change the CCT and wattage/lumens, only the lens needs to be exposed to move a dip switch with no disassembly of the housing required.



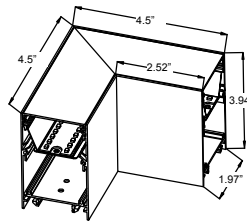
DLM2 SERIES

LED BASE MODULES



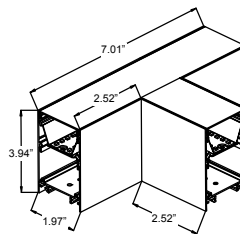
	8' module	4' module	1' module
L	96.3"	47.2	11.5"
W	1.97"	1.97"	1.97"
H	3.94"	3.94"	3.94"

CONNECTORS PAGE 1



90 DEGREE CONNECTOR

**MODEL:
DLM2-90C**



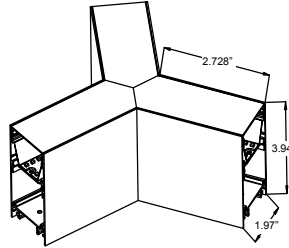
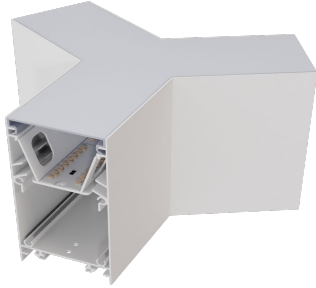
T CONNECTOR

**MODEL:
DLM2-TC**

DLM2 SERIES

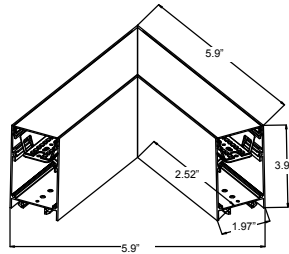
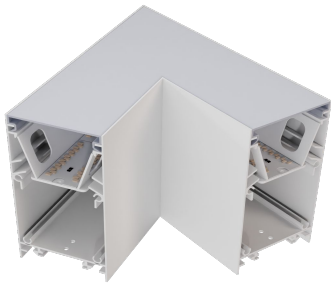


CONNECTORS PAGE 2



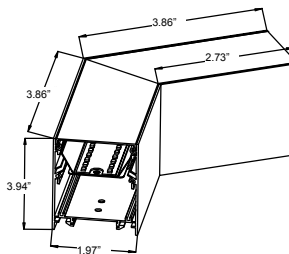
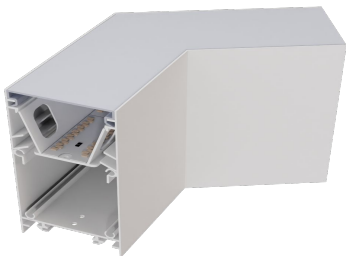
3 way
Connector

**MODEL:
DLM2-3WC**



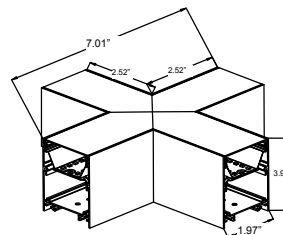
SHARP 60
DEGREE
CORNER

**MODEL:
DLM2-60DC**



120 DEGREE
CORNER

**MODEL:
DLM2-120DC**



4 WAY
CONNECTOR

**MODEL:
DLM2-4WC**

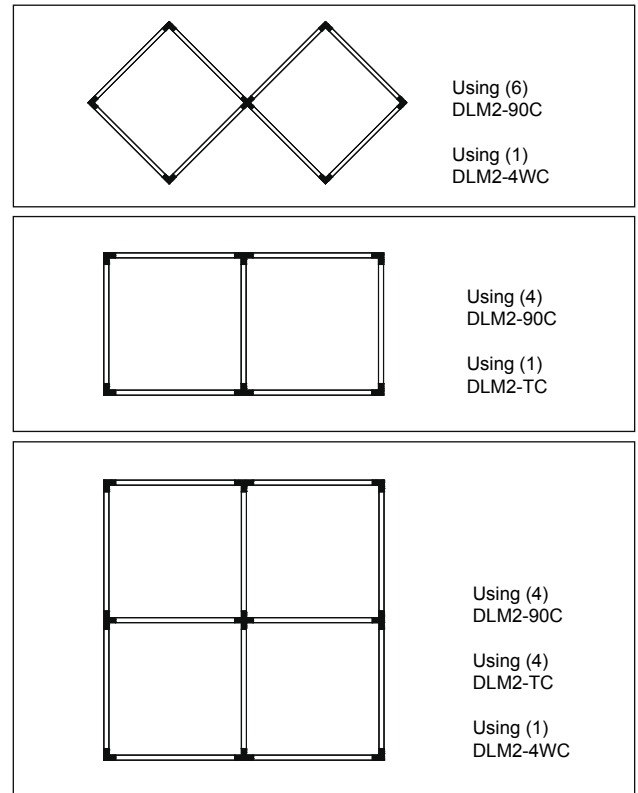
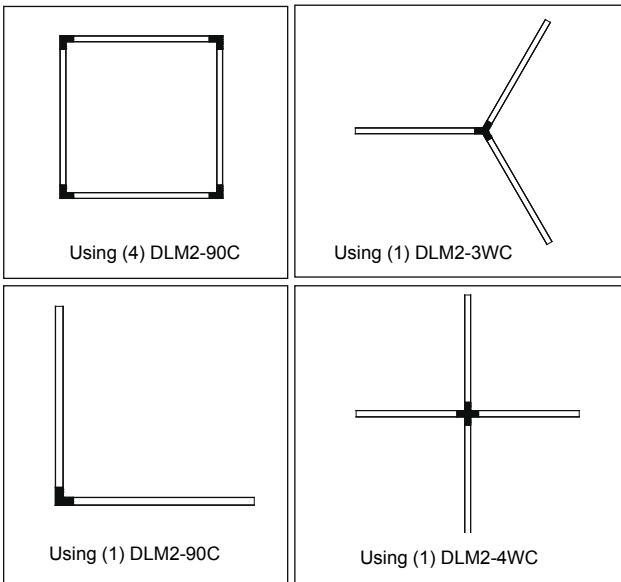
DLM2 SERIES

DLM2 SERIES

CONFIGURATIONS

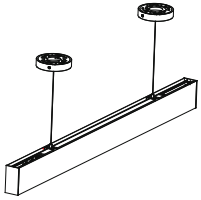
You can build any number of stunning shapes using our connectors and patented field cuttable custom LEDs.

Achieve the shape and look of your dreams in pendant, surface, or recessed mounting options.



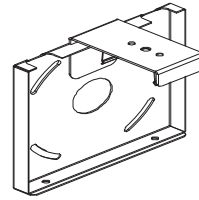
DLM2 SERIES

MOUNTING ACCESSORIES

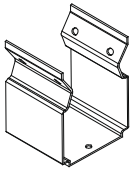


Pendant Kit
Comes with 5' AC cables, power cable, grippers, Power and Non Power Canopy

MODEL: DLM2-PEN

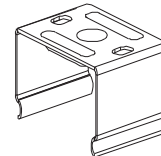


Wall Bracket Kit
MODEL: DLM2-WBK

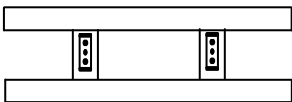


Internal Connector
Required Captive Screws Included

MODEL: DLM2-IC

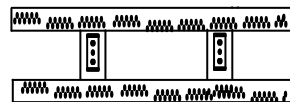


Surface Mounted Clip
MODEL: DLM2-SMC



Recessed Flange Kit
*Field Cuttable to any angle
End Caps are removable*

MODEL: DLM2-RFK-1'1/4'1/8'



Recessed Mud In Flange Kit
*Field Cuttable to any angle.
End Caps are removable*

MODEL: DLM2-RMK-1'1/4'1/8'



Project Name: _____
 Model Number: _____
 Type: _____

DLM2 SERIES



UPLIGHTING OPTIONS

Uplighting modules are installed in field. They are sold in 1, 4, and 8 foot segments, cuttable down to 1.5 inches.

5CCT - 8 Foot Uplight	MODEL: DLM2-8FU
5CCT - 4 Foot Uplight	MODEL: DLM2-4FU
5CCT - 1 Foot Uplight	MODEL: DLM2-1FU

DETAILED WATTAGE AND LUMEN INFORMATION

DLM2	WATTAGE	27K	30k	35K	40K	50K
1	7	798	840	865	882	934
1	13	1482	1560	1607	1638	1735
1	15	1710	1800	1854	1890	2002
4	25	2850	3000	3090	3150	3337
4	38	4332	4560	4697	4788	5073
4	50	5700	6000	6180	6300	6674
8	50	5700	6000	6180	6300	6674
8	75	8550	9000	9270	9450	10012
8	100	11400	12000	12360	12600	13349

