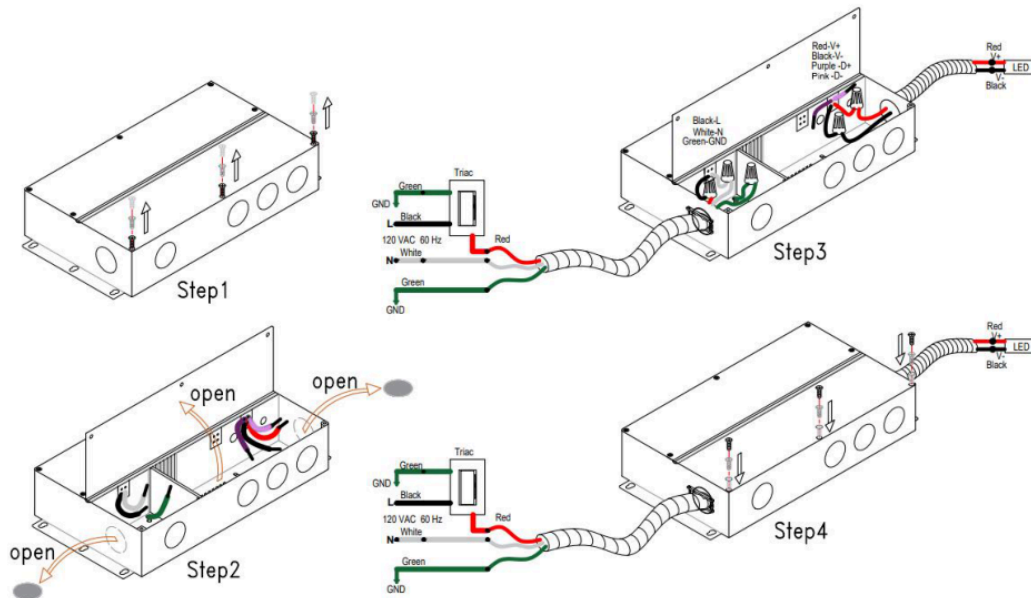
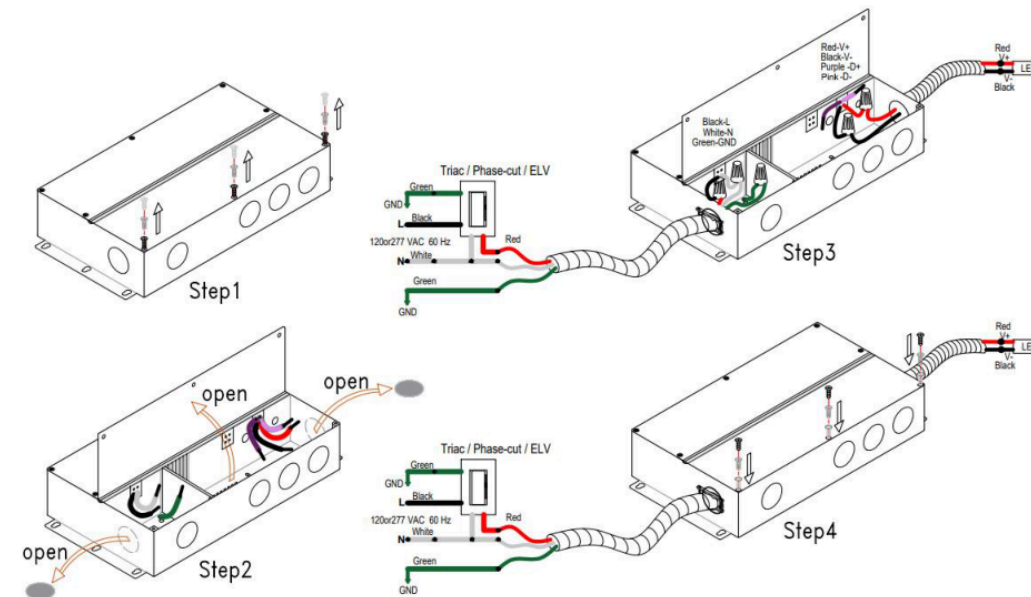


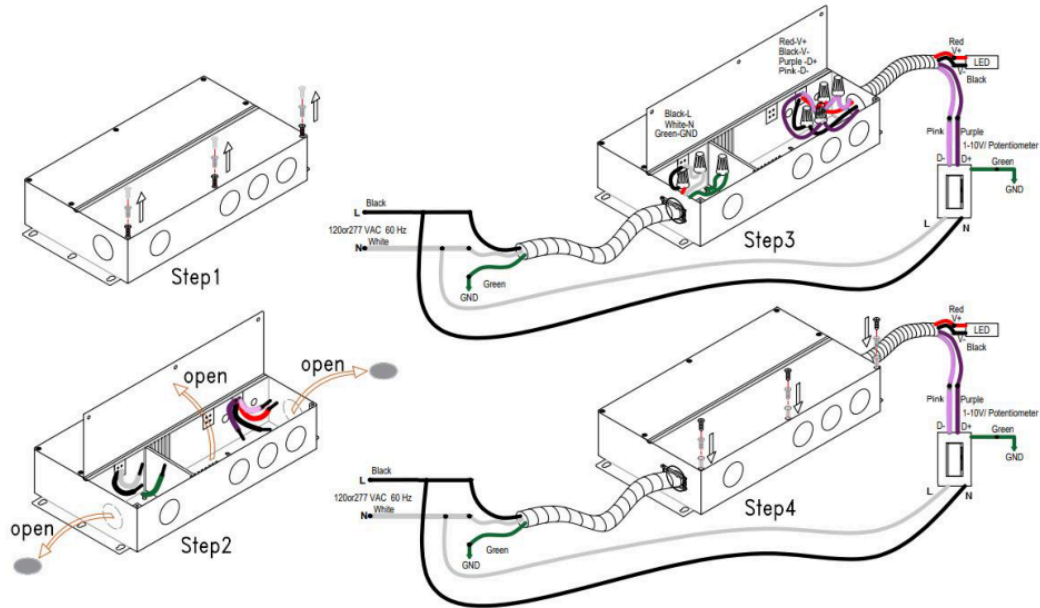
Using Triac MLV wiring diagram



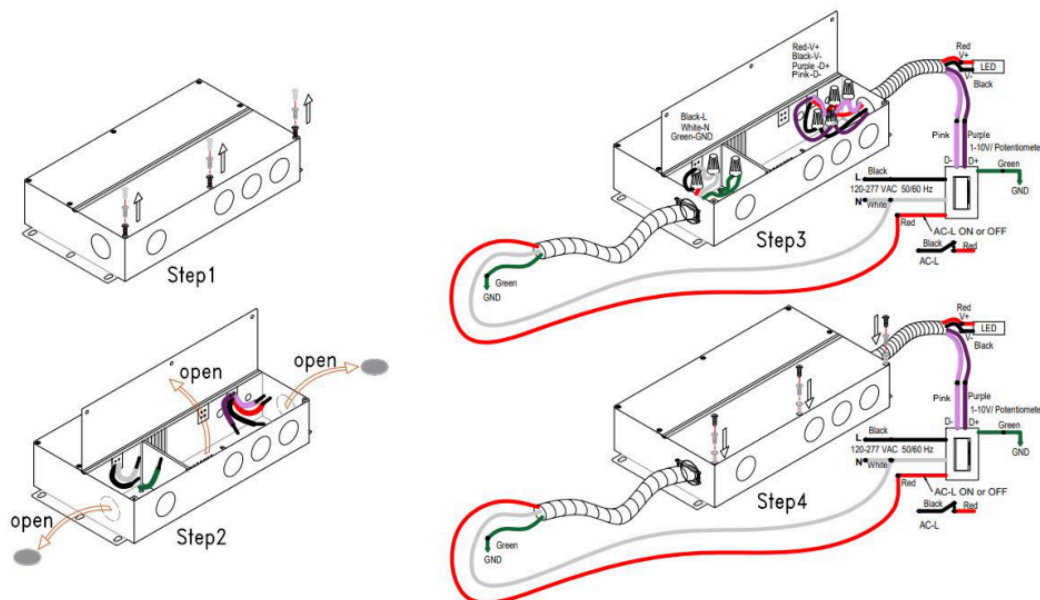
Using Triac ELV wiring diagram



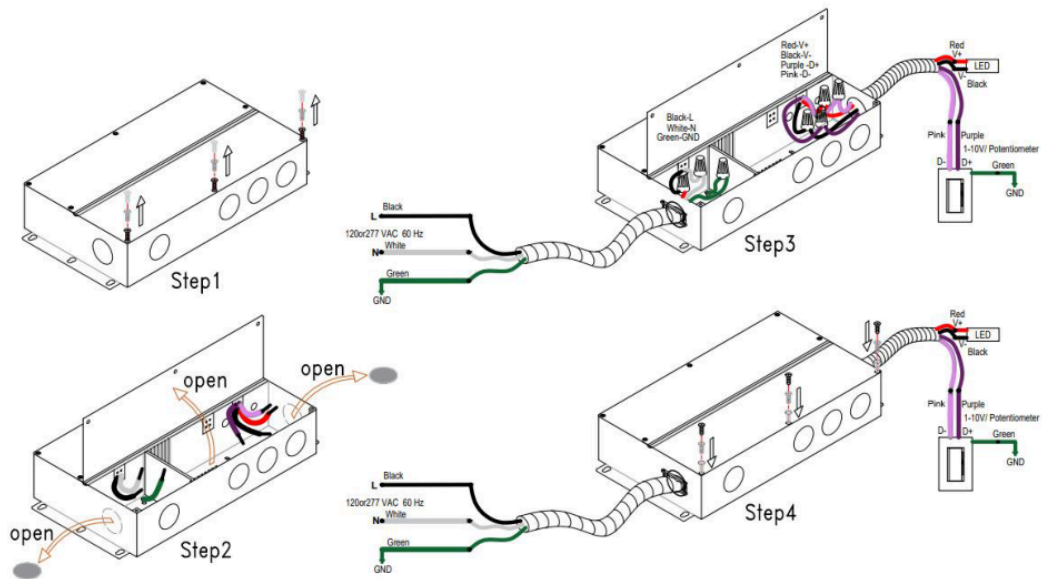
※Using 0-10/1-10V dimming (The power supply does not pass through the dimmer)



※Using 0-10/1-10V dimming (Power supply through dimmer switch)



※Using 0-10/1-10V dimming(The dimmer is not connected to high voltage)



※The topology

